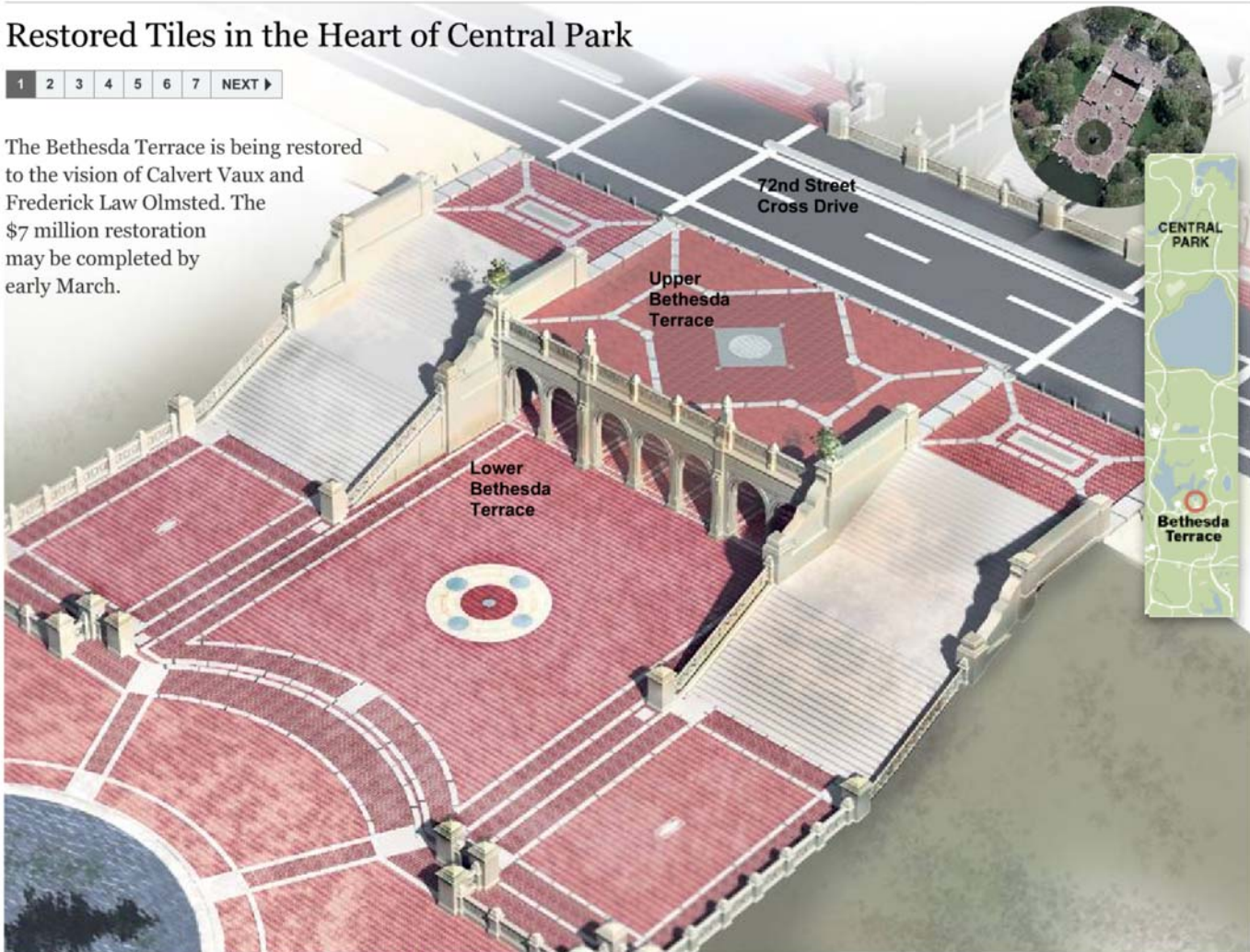


Restored Tiles in the Heart of Central Park

1 2 3 4 5 6 7 NEXT ▶

The Bethesda Terrace is being restored to the vision of Calvert Vaux and Frederick Law Olmsted. The \$7 million restoration may be completed by early March.



CENTRAL
PARK

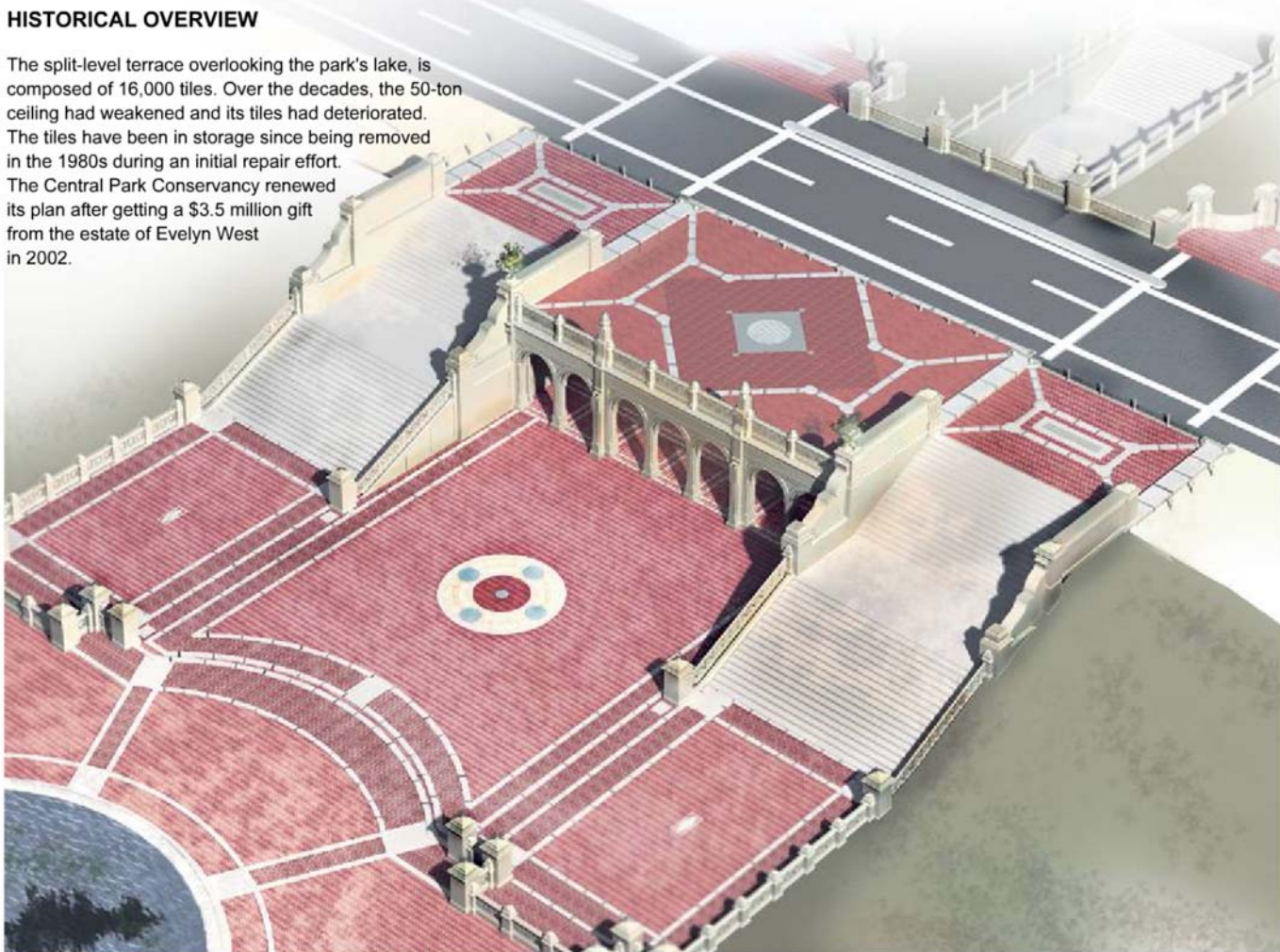
Bethesda
Terrace

Restored Tiles in the Heart of Central Park

1 2 3 4 5 6 7 NEXT ▶

HISTORICAL OVERVIEW

The split-level terrace overlooking the park's lake, is composed of 16,000 tiles. Over the decades, the 50-ton ceiling had weakened and its tiles had deteriorated. The tiles have been in storage since being removed in the 1980s during an initial repair effort. The Central Park Conservancy renewed its plan after getting a \$3.5 million gift from the estate of Evelyn West in 2002.



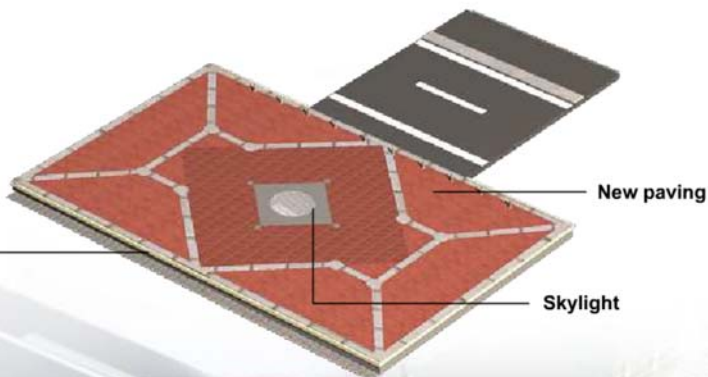
Restored Tiles in the Heart of Central Park

1 2 3 4 5 6 7 NEXT ▶

UPPER TERRACE

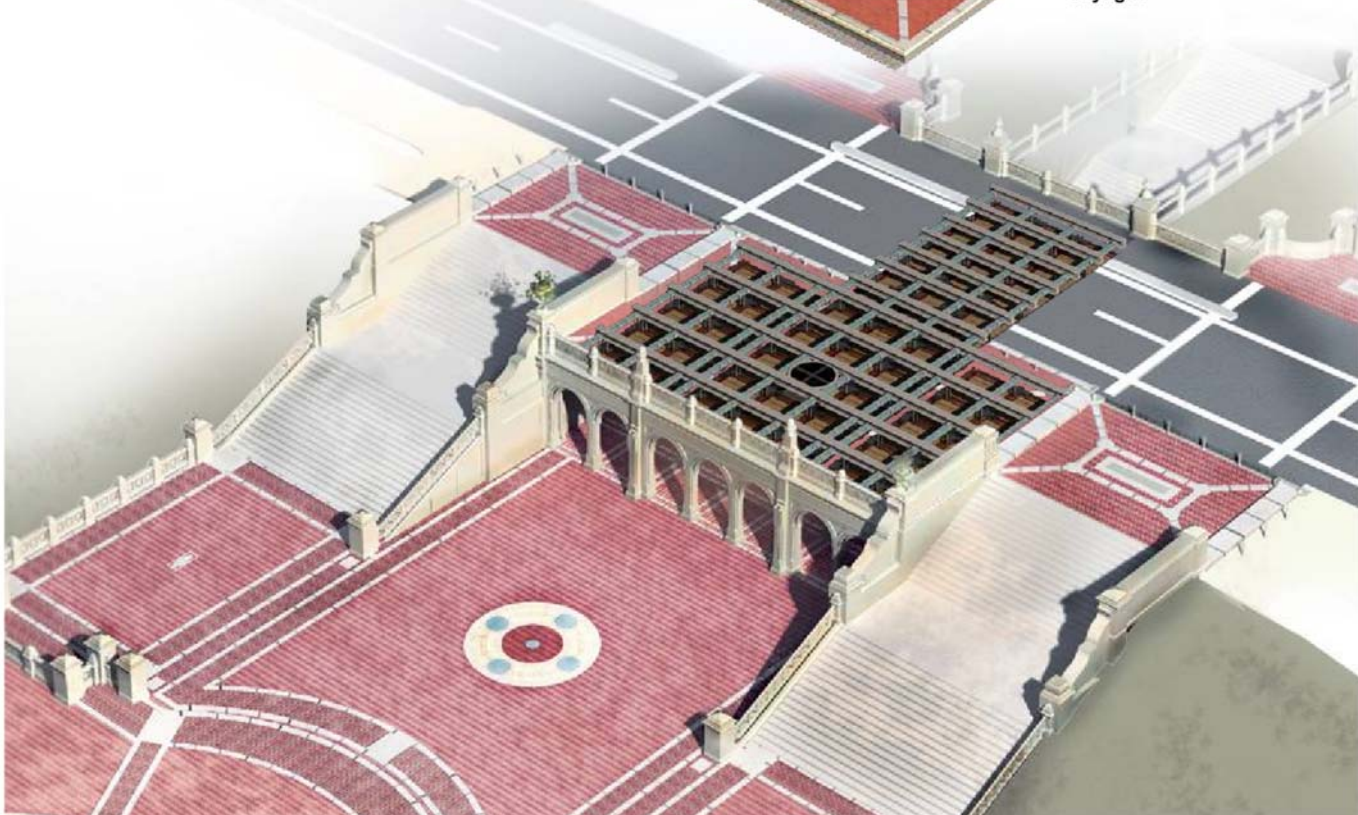
A new waterproof membrane will catch water leaking through the pavement and redirect it to a subsurface drain before it reaches the ceiling tiles.

Waterproof membrane



New paving

Skylight



Restored Tiles in the Heart of Central Park

1 2 3 4 5 6 7 NEXT ▶

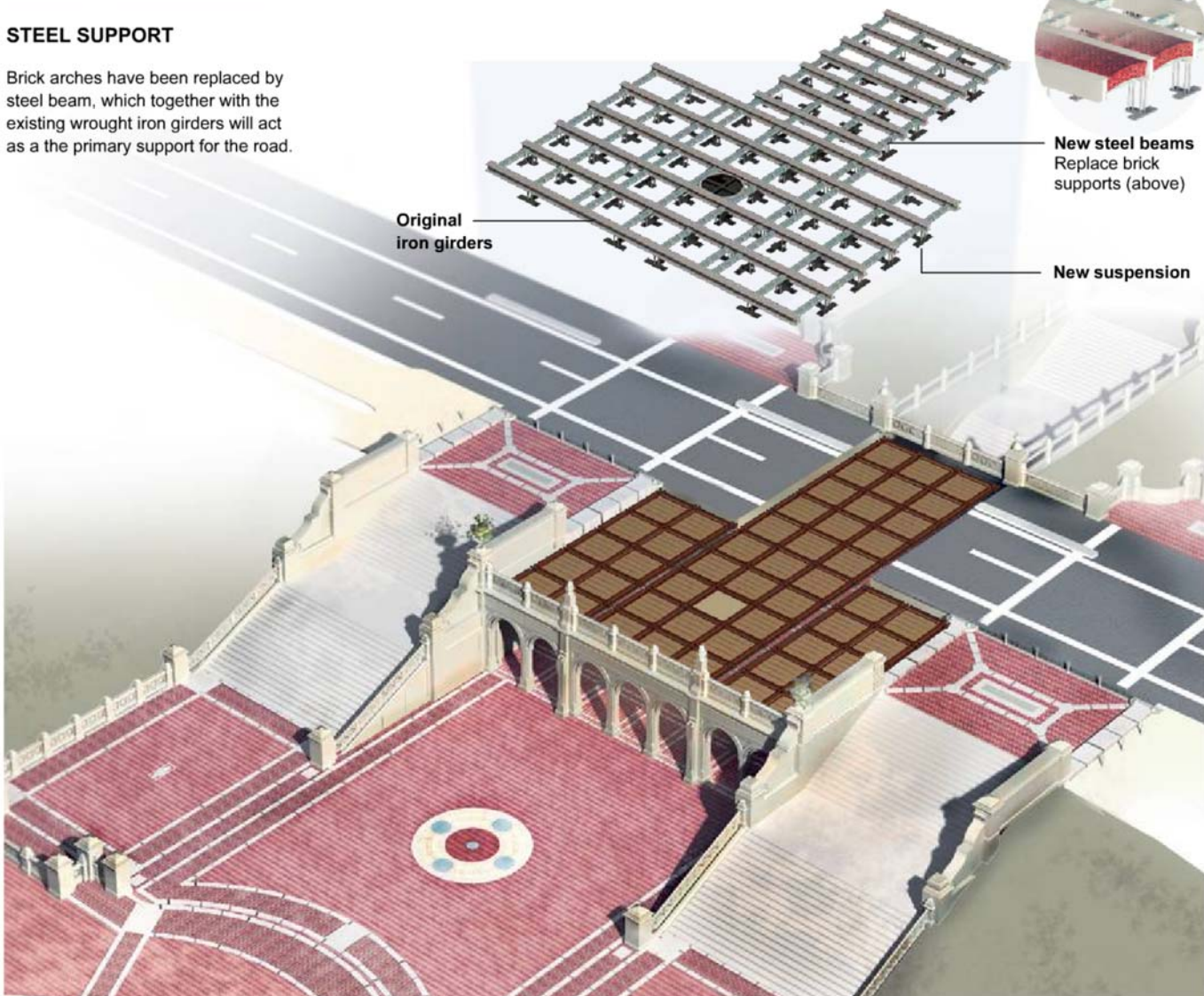
STEEL SUPPORT

Brick arches have been replaced by steel beam, which together with the existing wrought iron girders will act as the primary support for the road.

Original
iron girders

New steel beams
Replace brick
supports (above)

New suspension



Restored Tiles in the Heart of Central Park

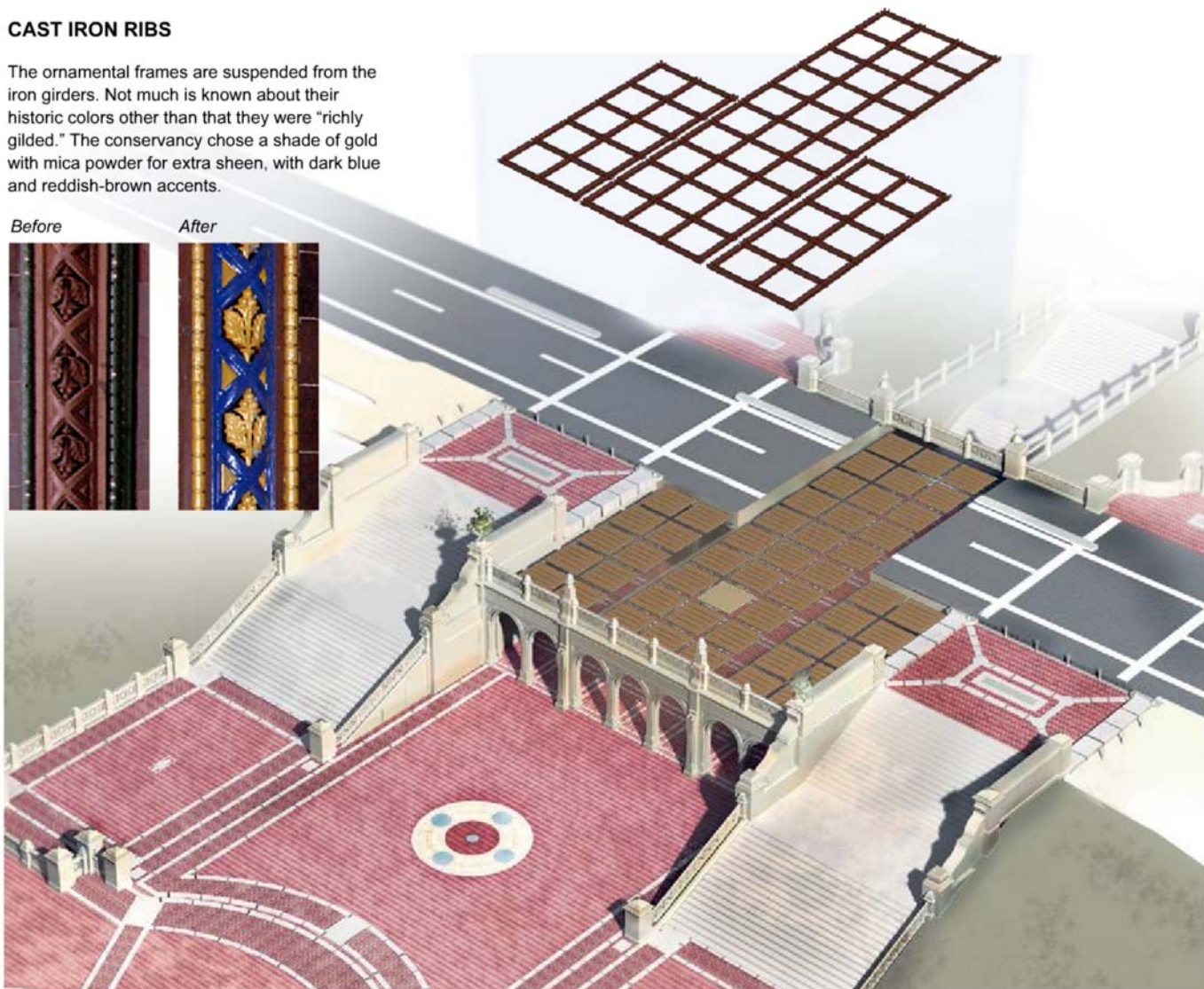
1 2 3 4 5 6 7 NEXT ▶

CAST IRON RIBS

The ornamental frames are suspended from the iron girders. Not much is known about their historic colors other than that they were "richly gilded." The conservancy chose a shade of gold with mica powder for extra sheen, with dark blue and reddish-brown accents.

Before

After

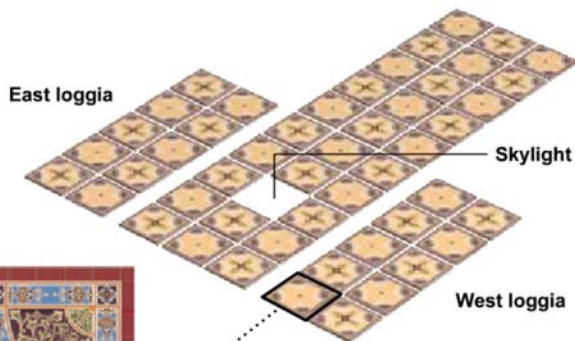
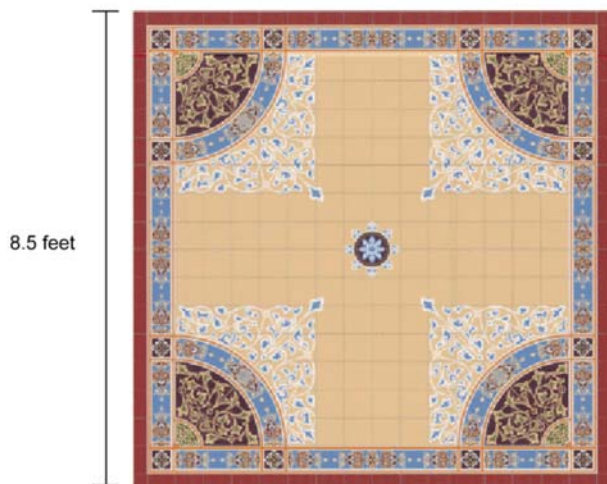


Restored Tiles in the Heart of Central Park

1 2 3 4 5 6 7 NEXT ▶

REINSTALLING TILE PANELS

The 49 panels alternate between two patterns, made up of 52 unique tile designs. Three panels, consisting only of brand new tiles, will be placed in one of the two side loggias.



Each panel has 324 encaustic, or inlaid, tiles. They were made using small pieces of colored clay laid into a mold and baked together so that the colors are embedded, not just a surface glaze.

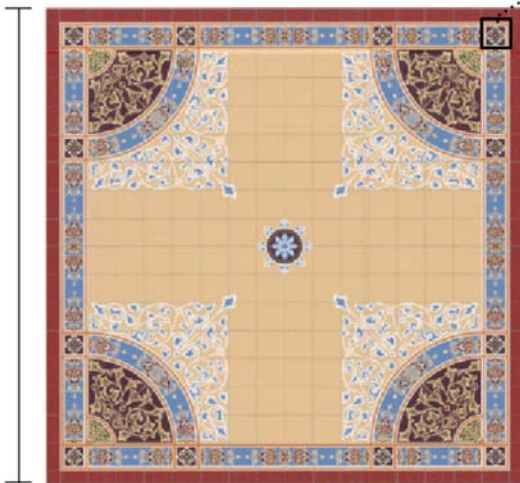
Restored Tiles in the Heart of Central Park

1 2 3 4 5 6 7 NEXT ▶

TILE RESTORATION

Conservators have spent the last two years cleaning all 15,786 tiles, reattaching broken segments and repainting the tiles to match their original colors.

8.5 feet



Cleaning and Repairing

After



Before



Replacing Damage

About 10 percent of the tiles needed to be replaced. The tiles were recreated in England for \$250 to \$270 each.

Original



New



Blank tiles added to make the depths level.

6 inches